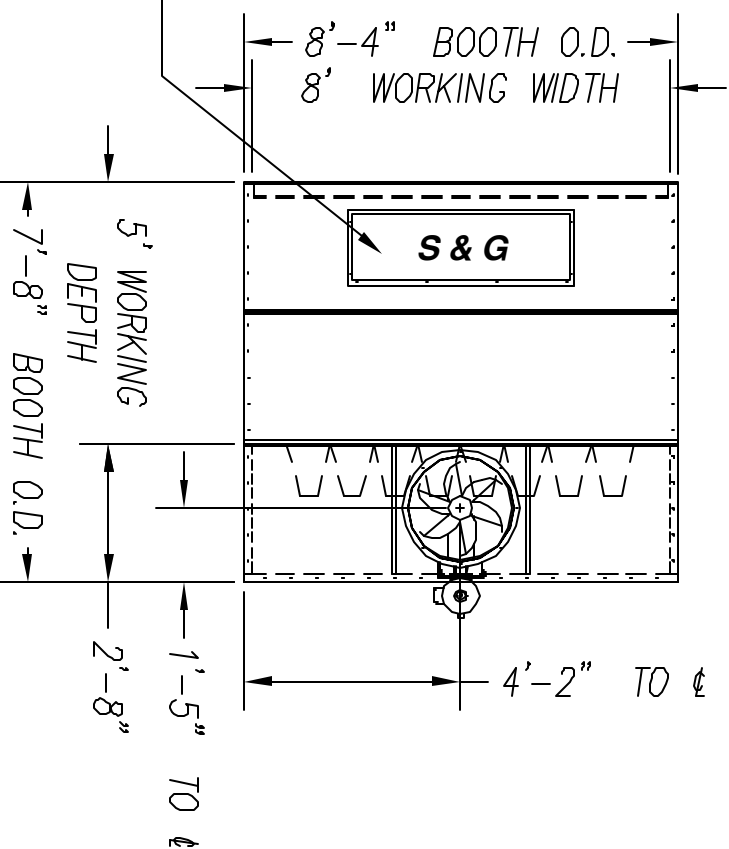
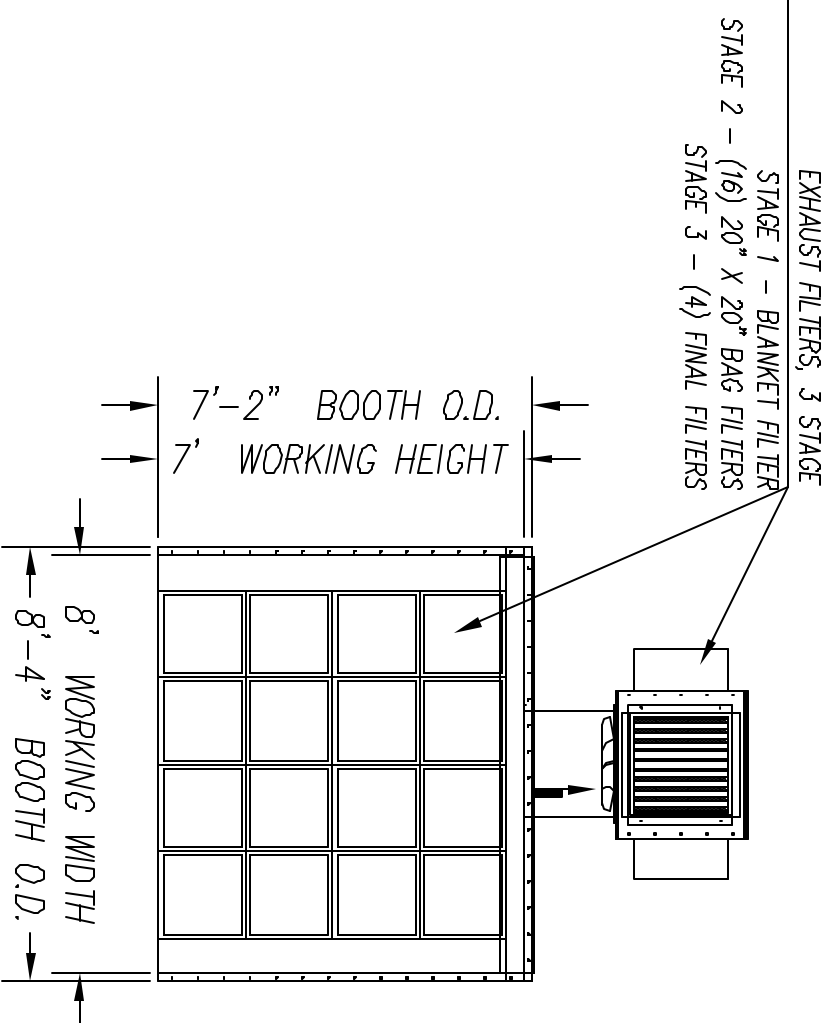


COL-MET SPRAY BOOTHS ARE MFG. IN ACCORDANCE WITH IFC-2000 SECTION 1504.1.2.1 THROUGH 1504.1.2.2, SECTION 1504.2.3, SECTION 1504.2.5, SECTION 1504.2.7, SECTION 1504.3, SECTION 1504.3.1, SECTION 1504.3.2, AND NFPA-33

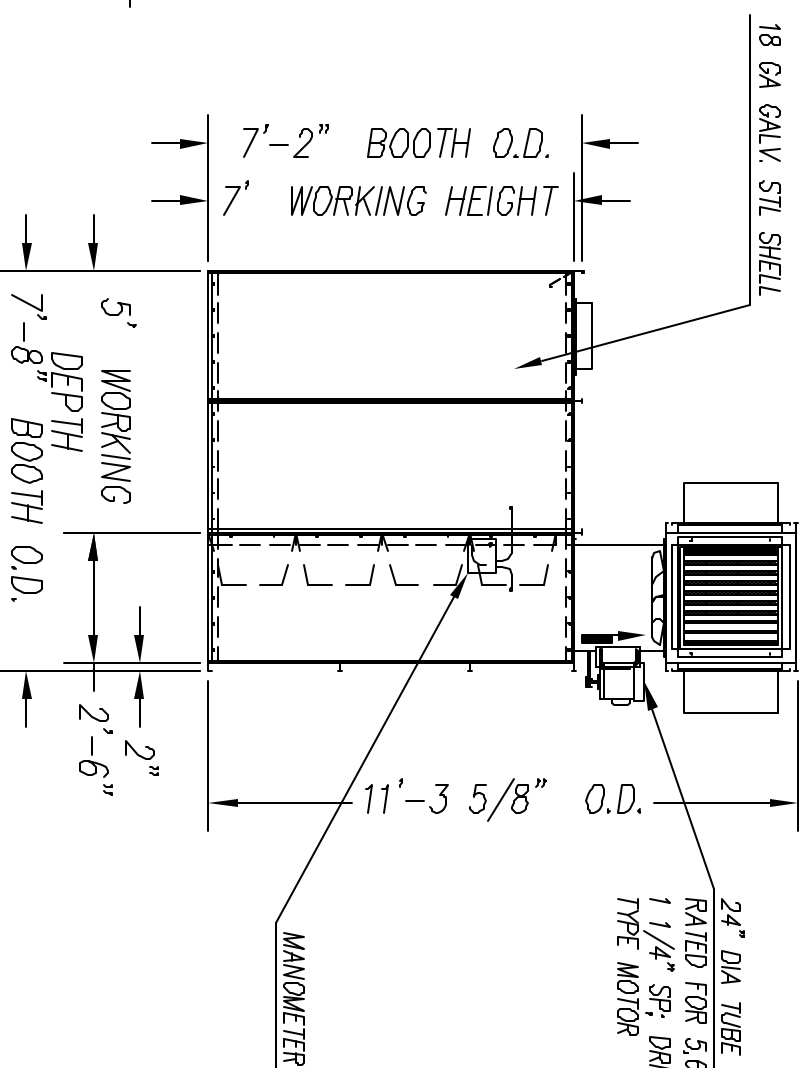
LIGHT FIXTURES, (1) SUPPLIED
FOUR TUBE 48"; 32 WATT FIXTURES MOUNTED BEHIND CLEAR TEMPERED GLASS PANES, "UL" RATED FOR THEIR INTENDED USE AND PLACEMENT, (1 S & G)



PLAN VIEW WITH FILTER BOX REMOVED



END VIEW



SIDE ELEVATION

24" DIA TUBE AXIAL FAN UNIT
RATED FOR 5,600 SCFM EXHAUST @
1 1/4" SP., DRIVEN BY A 3 HP ODP
TYPE MOTOR

THE ASSEMBLY DRAWINGS YOU HAVE RECEIVED ARE IN A GENERAL FORMAT. OPTIONAL ACCESSORIES MAY NOT BE SHOWN AS PROVIDED. PLEASE REFER TO YOUR PURCHASE ORDER FOR A COMPLETE DESCRIPTION OF YOUR BOOTH ORDER.

APPROVAL DRAWING
MANUFACTURING WILL AWAIT APPROVAL
END USER SIGNATURE: _____
MOTOR SUPPLY VOLTAGE: _____
LIGHT SUPPLY VOLTAGE: _____
PLEASE SIGN THE APPROVAL DRAWING. MAKE ANY NOTES TO DRAWING THAT MAY AFFECT ORDER. NOTE: ANY CHANGES TO DRAWING MAY EFFECT CHARGES, DELAY APPROVAL PROCESS AND DELAY THE PRODUCTION OF YOUR ORDER.

VOLTAGE CONFIRMATION
MOTOR 480/3/60 VAC
LIGHTS 120/60 VAC
IF DIFFERENT, INDICATE BELOW
VAC (MOTOR)
VAC (LIGHTS)

GENERAL NOTES:
1. ALL BOLTED CONSTRUCTION #5/16" BOLTS ON STANDARD 6" CENTERS.
2. BOOTH TO BE 18 GA. GALVANIZED UNPAINTED SHEET METAL.
3. ALL MOTOR CONTROLS SWITCHES, LIGHT LAMPS OR TUBES, INCLUDING CONNECTIONS TO EQUIPMENT TO BE FURNISHED AND INSTALLED BY CUSTOMER EXCEPT AS NOTED.
4. IT SHALL BE THE CUSTOMERS RESPONSIBILITY TO PROVIDE ADEQUATE EXHAUST FILTRATION, EXHAUST AIR & AIR MAKEUP PER NFPA33 AND ALL OTHER AUTHORITIES HAVING JURISDICTION RELATED TO ALL CODE REQUIREMENTS.
5. ALL LOCAL, CITY & STATE PERMITS AND INSURANCE APPROVAL TO BE OBTAINED BY CUSTOMER.
6. CUSTOMER TO FURNISH ROOF-PITCH, DIRECTION & ROOF CONSTRUCTION IF FLASHING IS REQUIRED.

COMPONENT DESCRIPTIONS:
1) LIGHT HWP TOTAL: 1 QTY: 1 THE S&G
2) AC 240 Ø12 QTY: 1 THE S&G
3) EXHAUST FAN SIZE: 24" W/ 3 HP THE MOTOR
4) STAGE 1 FILTER TOTAL: 1 TYPE OF FILTER: BLANKET
5) STAGE 2 FILTER TOTAL: 16 TYPE OF FILTER: 24" X 24" X 12" BNC
6) STAGE 3 FILTER TOTAL: 4 TYPE OF FILTER: 24" X 24" X 12" METAL FINAL FILTER



TITLE NAME		PB 0807-05 APPROVAL DRAWING	
CONTRACT NO	pwelech	DRAWN 8/29/05	DATE
CHECK 8/29/05		APP'R	
ISSUED		SIZE PSON NO	REV
		B	125-0807-05-01-01 DWS
SCALE NTS	WEIGHT	SHEET	1 OF 1